

Laboratory refrigerators and freezers

Slimline[®]



- laboratory refrigerators (+1 / +8 °C)
- laboratory freezers (-18 / -22 °C)
- plasma freezers (-30 / -35°C)
- blood bank refrigerators (+4 °C)
- combination fridge / freezer (+4 & -35°C)



Skadi[®] Europe

Slimline® laboratory / pharmacy refrigerators & freezers

The Slimline® laboratory refrigerators and freezers offer a wide range of configurations ranging from routine laboratory applications up to high demanding storage protocols for blood banking. Temperature ranges which are available:

laboratory series

- LR serie + 1°C / + 8°C
- LF serie -18°C / -22°C
- LDF serie -30°C / -35°C
- LRF serie + 4°C & -35°C

blood bank series

- BB serie + 4°C
- BP serie -35°C
- BBP serie + 4°C & -35°C



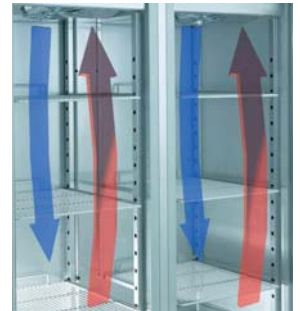
Temperature uniformity and recovery



fixed doors are also lighted

All temperature configurations offer forced air circulation by internal fans to ensure superior temperature uniformity and fast temperature recovery. Our line is available in several storage capacities: 130 liter (undercounter / benchtop), 610 liter (single door upright) and 1325 liter (double door upright). Additionally we offer our combination fridge / freezer (2 x 286 l).

The philosophy behind our Refrigerator and Freezer line is to offer the safest environment for your products by using our UltraSafe® temperature control system in combination with the circulating forced air.



superior temperature uniformity by double evaporators for 1400 serie

Slimline® performance features

- Only Slimline® uses standard stainless steel interior and exterior on all cabinets;
- Microprocessor control with digital display / controller;
- Adjustable temperature set points;
- High temperature alarm;
- Low temperature alarm;
- Date, time, alarm buzzer;
- Infrared data transmission;
- Dry contact for remote alarm;
- Door open alarm (optional for 130 series);
- Unique traceability of alarms with storage history of last 20 alarm events;
- Light on/off (in case of glass door);
- Auto switch off fan when door opens;
- Automatic defrost cycle and melt water evaporation in heated tray (not for 130 series);
- Chamber with rounded corners for easy cleaning;
- 60 mm of CFC-free polyurethane foam insulation;
- Always pass through standard doors because of Slimline® design: only 80 cm wide and 198 cm high;
- Standard fitted with heavy duty double-roll casters for easy transportation (lockable);
- Easy to mount stainless steel adjustable feet also come standard inside every cabinet;
- Flexible storage: you can mix drawers, grids and shelves in one cabinet without any internal modifications.



double-roll casters for easy transportation (lockable).



easy to mount stainless steel adjustable feet come also with every cabinet

Slimline® refrigerators +1°C to +8°C



LR130G



LR1400

Model no:	LR130	LR130G
Capacity	130 l	130 l
Doors	1 stainless steel door	1 glass door (double layer)
Door locks	1	1
Air circulation	forced air circulation by inner fan	
Defrost	fully automatic defrost cycle	
Temperature range	+1°C to +8°C (factory set on +4°C)	
Temperature precision	+/- 0.5°C	+/- 0.5°C
Temperature stability	+/- 1 °C	+/- 1 °C
Temperature uniformity	+/- 2°C	+/- 2°C
Microprocessor	adjustable set-point, high alarm, low alarm (audible, visual and remote alarm)	
External dimensions W x D x H mm	630 x 567 x 850	630 x 567 x 850
Internal dimensions W x D x H mm	540 x 415 x 460 540 x 270 x 180 in front of compressor compartment	
Shelves	2 stainless steel perforated shelves (max 5)	
W x D mm	507 x 367	507 x 367
Cabinet material	stainless steel inside and outside	
Insulation	50 mm non-CFC, foamed polyurethane	
Certification	CE certified	
Electrical	220-240V, 50/60* Hz	
Average power consumption	0.22 kWh	0.22 kWh
Net weight	55 kg	55 kg
Shipping dimensions W x D x H mm	65 kg 670x645x1020	65 kg 670x645x1020
Stackable	standard manufactured for stacking	

Model no:	LR700	LR700G	LR1400	LR1400G
Capacity	610 l	610 l	1325 l	1325 l
Doors	1 stainless steel door	1 glass door (double layer)	2 stainless steel doors	2 glass doors (double layer)
Door locks	1	1	2	2
Air circulation	forced air circulation by inner fan			
Defrost	fully automatic defrost cycle			
Temperature range	+1°C to +8°C (factory set on +4°C)			
Temperature precision	+/- 0.5°C	+/- 0.5°C	+/- 0.5°C	+/- 0.5°C
Temperature stability	+/- 1 °C	+/- 1 °C	+/- 1 °C	+/- 1 °C
Temperature uniformity	+/- 2°C	+/- 2°C	+/- 2°C	+/- 2°C
Microprocessor	adjustable set-point, high alarm, low alarm, door alarm (audible, visual and remote alarm)			
External dimensions W x D x H mm	710 x 800 x 1985	710 x 800 x 1985	1420 x 800 x 1985	1420 x 800 x 1985
Internal dimensions W x D x H mm	590 x 675 x 1380	590 x 675 x 1380	1300 x 675 x 1380	1300 x 675 x 1380
Shelves	3 adjustable grids (max 16)		6 adjustable grids (max 32)	
W x D mm	530 x 650	530 x 650	530 x 650	530 x 650
Cabinet material	stainless steel inside and outside			
Insulation	60 mm non-CFC, foamed polyurethane			
Certification	CE certified			
Electrical	220-240V, 50/60* Hz			
Average power consumption	0.30 kWh	0.36 kWh	0.38 kWh	0.41 kWh
Net weight	135 kg	145 kg	235 kg	245 kg
Shipping dimensions W x D x H mm	150 kg 730x840x2040	160 kg 730x840x2040	250 kg 1440x840x2040	260 kg 1440x840x2040

above data is tested with empty units set on +4°C and ambient temperature of +22°C.

* 60 Hz version is available on special request

Slimline® blood bank refrigerators +4°C



BB700

The supreme members of the Slimline® refrigerators are the blood bank refrigerators. All BB series come standard with double layer glass doors with dual bulb light. For convenient storage of blood bags the units are equipped with heavy-duty stainless steel roll-out drawers.

The standard 7-day chart recorder with battery backup, ensures constant temperature recording even during power failures. The independent sensor for the recorder is installed in a buffered solution to display the exact temperature in a blood bag!



The BB series: the answer for safe and efficient storage of blood bags. The series are available in 130 liter (undercounter / benchtop), 610 liter (single door upright) and 1325 liter (double door upright).



Model no:	BB130	BB700	BB1400
Capacity	130 l	610 l	1325 l
Doors	1 glass door (double layer)	1 glass door (double layer)	2 glass doors (double layer)
Lights	single bulb	dual bulb, quick-change fluorescent	
Door locks	1	1	2
Air circulation	forced air circulation by inner fan		
Defrost	fully automatic defrost cycle		
Temperature range	+2°C to +6°C (factory set on +4°C)		
Temperature precision	+/- 0.5°C	+/- 0.5°C	+/- 0.5°C
Temperature stability	+/- 1 °C	+/- 1 °C	+/- 1 °C
Temperature uniformity	+/- 2°C	+/- 2°C	+/- 2°C
Microprocessor	adjustable set-point, high alarm, low alarm, door alarm** (audible, visual and remote alarm)		
Chart recorder	7-day chart recorder In wall mountable box	7-day chart recorder factory installed in top panel	
External dimensions W x D x H mm	630 x 567 x 850	710 x 800 x 1985	1420 x 800 x 1985
Internal dimensions W x D x H mm	540 x 415 x 460	590 x 675 x 1380	1300 x 675 x 1380
Drawers	3 roll-out drawers	6 roll-out drawers	12 roll-out drawers
W x D x H mm	475 x 290 x 75	490 x 610 x 150	490 x 610 x 150
Cabinet material	stainless steel inside and outside		
Insulation	60 mm non-CFC, foamed polyurethane		
Certification	CE certified		
Electrical		220-240V, 50/60* Hz	
Average power consumption	0.22 kWh	0.36 kWh	0.41 kWh
Net weight	55 kg	190 kg	335 kg
Shipping dimensions W x D x H mm	65 kg 670x645x1020	200 kg 730x840x2040	345 kg 1440x840x2040

above data is tested with empty units set on +4°C and ambient temperature of +22°C.

* 60 Hz version is available on special request

** BB130 door alarm optional

Slimline® dual temperature +4°C & -35°C



BBP300

Two for one!

Slimline® designed two total independent cooling chambers (+4 °C top and -35°C bottom compartment) in less than 1 m² of valuable lab space. The ideal solution when space, dual temperature control and performance are critical.

The LRF300 +4°C & -35°C combination refrigerator / freezer offers 2 x 286 liters of safe and reliable storage capacity. The inner fans with forced air circulation ensure superior temperature uniformity and fast temperature recovery. The upper chamber standard comes with a double layer glass door where the bottom compartment comes with a stainless steel door. Both chambers have their own independent cooling system, controller and power.

The BBP300 is the combination blood & plasma system and comes with 2 x 3 stainless steel roll-out drawers and standard 2 chart recorders.

Model no:	LRF300	BBP300
Capacity	2 x 286 l	2 x 286 l
Doors	upper: 1 glass door (double layer) bottom: 1 stainless steel door	
Lights	small top light for upper part	
Door locks	2	2
Air circulation	forced air circulation by inner fan	
Defrost	fully automatic defrost cycle for both parts	
Temperature range	+4°C upper part / -35°C lower part	
Temperature precision	+/- 0.5°C	+/- 0.5°C
Temperature stability	+/- 1 °C	+/- 1 °C
Temperature uniformity	+/- 2°C	+/- 2°C
Microprocessor	adjustable set-point, high alarm, low alarm, door alarm 2 separate and independent controllers (audible, visual and remote alarm)	
Chart recorder	optional	2 x 7-day chart recorder factory installed in top panel
External dimensions W x D x H mm	710 x 800 x 1985	
Internal dimensions W x D x H mm	590 x 675 x 590 (x 2 compartments)	
Drawers	Drawers optional => standard 2 x 2 grids	2 x 3 roll-out drawers
W x D x H mm	grids 530 x 650	drawers 490 x 610 x 150
Cabinet material	stainless steel inside and outside	
Insulation	60 mm non-CFC, foamed polyurethane	
Certification	CE certified	
Electrical	220-240V, 50/60* Hz	
Average power consumption	upper: 0.22 kWh bottom: 0.35 kWh	upper: 0.22 kWh bottom: 0.35 kWh
Net weight	145 kg	190 kg
Shipping dimensions W x D x H mm	160 kg 730x840x2040	205 kg 730x840x2040

above data is tested with empty units set on +4°C for upper part and -35 °C for bottom part and ambient temperature of +22°C.

* 60 Hz version is available on special request

Slimline® freezers -20°C or -35°C



LF130



LF700

Model no:	LF130	LDF130
Capacity	130 l	130 l
Doors	1 stainless steel door	1 stainless steel door
Door locks	1	1
Air circulation	static cooling	static cooling
Defrost	manual defrosting needed	
Temperature range	-18°C to -22°C (factory set on -20°C)	-30°C to -35°C (factory set on -30°C)
Temperature precision	+/- 0.5°C	+/- 0.5°C
Temperature stability	+/- 1 °C	+/- 1 °C
Temperature uniformity	+/- 2°C	+/- 2°C
Microprocessor	adjustable set-point, high alarm, low alarm (audible, visual and remote alarm)	
External dimensions W x D x H mm	630 x 567 x 850	630 x 567 x 850
Internal dimensions W x D x H mm	540 x 415 x 460 540 x 270 x 180 in front of compressor compartment	
Shelves W x D mm	2 stainless steel perforated shelves (max 5) 507 x 367	
Cabinet material	stainless steel inside and outside	
Insulation	50 mm non-CFC, foamed polyurethane	
Certification	CE certified	
Electrical	220-240V, 50/60* Hz	
Average power cons.	0.29 kWh	0.32 kWh
Net weight	60 kg	61 kg
Shipping dimensions W x D x H mm	65 kg 670x645x1020	66 kg 670x645x1020
Stackable	standard manufactured for stacking	

Model no:	LF700	LF1400	LDF700
Capacity	610 l	1325 l	610 l
Doors	1 stainless steel door	2 stainless steel doors	1 stainless steel door
Door locks	1	2	1
Air circulation	forced air circulation by inner fan		
Defrost	fully automatic defrost cycle		
Temperature range	-18°C to -22°C (factory set on -20°C)		-30°C to -35°C (factory set on -30°C)
Temperature precision	+/- 0.5°C	+/- 0.5°C	+/- 0.5°C
Temperature stability	+/- 1 °C	+/- 1 °C	+/- 1 °C
Temperature uniformity	+/- 2°C	+/- 2°C	+/- 2°C
Microprocessor	adjustable set-point, high alarm, low alarm, door alarm (audible, visual and remote alarm)		
External dimensions W x D x H mm	710 x 800 x 1985	1420 x 800 x 1985	710 x 800 x 1985
Internal dimensions W x D x H mm	590 x 675 x 1380	1300 x 675 x 1380	590 x 675 x 1380
Shelves W x D mm	3 adjustable grids (max 16) 530 x 650	6 adjustable grids (max 32) 530 x 650	3 adjustable grids (max 16) 530 x 650
Cabinet material	stainless steel inside and outside		
Insulation	60 mm non-CFC, foamed polyurethane		
Certification	CE certified		
Electrical	220-240V, 50/60* Hz		
Average power cons.	0.46 kWh	0.62 kWh	0.53 kWh
Net weight	135 kg	240 kg	145 kg
Shipping dimensions W x D x H mm	150 kg 730x840x2040	250 kg 1440x840x2040	160 kg 730x840x2040

above data is tested with empty units set on -20°C and ambient temperature of +22°C.

* 60 Hz version is available on special request

Slimline® blood plasma freezers -35°C

The supreme members of the Slimline® freezers are the blood plasma cabinets. For convenient storage of plasma bags the units are equipped with heavy-duty stainless steel roll-out drawers.

The standard 7-day chart recorder with battery backup, ensures constant temperature recording even during power failures. The independent sensor for the recorder is installed in a buffered solution to simulate exact temperature in a plasma bag!



The BP series: the answer for safe and efficient storage of plasma bags. The series are available in 130 liter (undercounter / benchtop) and 610 liter (single door upright).

Model no:	BP130	BP700
Capacity	130 l	610 l
Doors	1 stainless steel door	1 stainless steel door
Door locks	1	1
Air circulation	static cooling	forced air circulation by inner fan
Defrost	manual defrosting needed	fully automatic defrost cycle
Temperature range	-30°C to -35°C (factory set on -35°C)	
Temperature precision	+/- 0.5°C	+/- 0.5°C
Temperature stability	+/- 1 °C	+/- 1 °C
Temperature uniformity	+/- 2°C	+/- 2°C
Microprocessor	adjustable set-point, high alarm, low alarm, door alarm** (audible, visual and remote alarm)	
Chart recorder	7-day chart recorder In wall mountable box	7-day chart recorder factory installed in top panel
External dimensions W x D x H mm	630 x 567 x 850	710 x 800 x 1985
Internal dimensions W x D x H mm	540 x 415 x 460	590 x 675 x 1380
Drawers W x D x H mm	3 roll-out drawers 475 x 290 x 75	8 roll-out drawers 490 x 610 x 150
Cabinet material	stainless steel inside and outside	
Insulation	60 mm non-CFC, foamed polyurethane	
Certification	CE certified	
Electrical	220-240V, 50/60* Hz	
Average power consumption	0.32 kWh	0.53 kWh
Net weight	64 kg	205 kg
Shipping dimensions W x D x H mm	69 kg 670x645x1020	220 kg 730x840x2040

above data is tested with empty units set on -35°C and ambient temperature of +22°C.

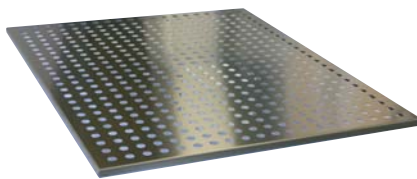
* 60 Hz version is available on special request

** BP130 door alarm optional

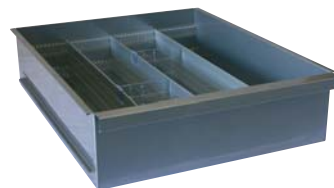
Slimline® Options & Accessories



Lexan® inner doors possible with separate lock



stainless steel perforated shelves



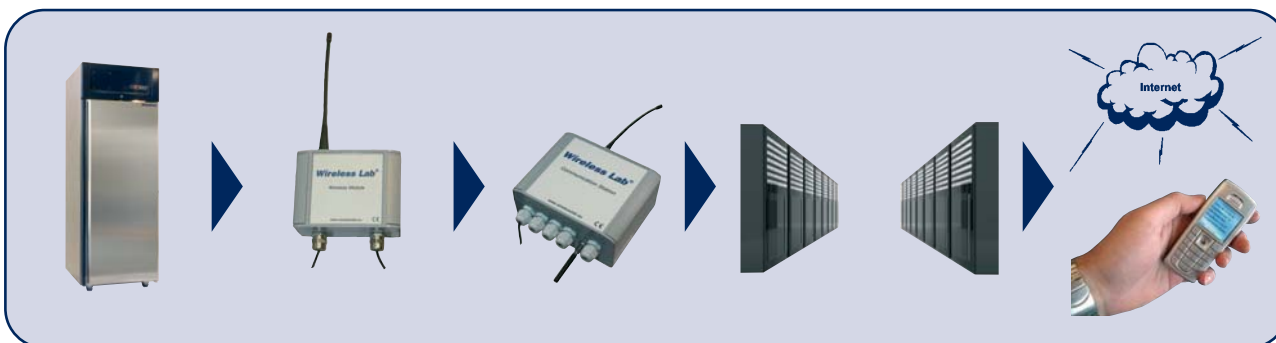
drawer with divider kit DV44

Model no:	Description:	For Slimline models
CH0047	4 inch chart recorder, circular, 7-day	LR700(G), LR1400(G), LF700, LF1400, LDF700 and LRF300
CH0047b	external 4 inch chart recorder, circular 7-day in a wall mountable box	LR130(G), LDF130 and LF130
CP0047a	recorder paper for CH0047 (0 to +14 °C)(52 pieces)	LR130(G), BB130, LR700(G), BB700, LR1400(G), BB1400 and LRF300 upper part
CP0047b	recorder paper for CH0047 (-50 to +40 °C)(52 pieces)	LF130, LDF130, BP130, LF700, LDF700, BP700, LF1400 and LRF300 bottom part
IP0047	red pens for CH0047 (6 pieces)	All Slimlines
GR150	additional grid (including pair of guides) maximum 16 grids in 700 and 32 grids in 1400 series	LR700(G), LR1400(G), LF700, LF1400, LDF700 and LRF300
SSPP130	stainless steel perforated shelf LabMini(including pair of guides) Maximum 5 shelves in LabMini cabinets	LR130(G), LF130 and LDF130
SSPP150	stainless steel perforated shelf (including pair of guides) maximum 16 shelves in 700 and 32 shelves in 1400 series	LR700(G), LR1400(G), LF700, LF1400, LDF700 and LRF300
DR130	stainless steel roll-our drawer LabMini (including pair of guides) maximum 3 drawers in LabMini cabinets	LR130(G), LF130 and LDF130
DR150	stainless steel roll-our drawer (including pair of guides) maximum 8 drawers in 700 and 16 drawers in 1400 series	LR700(G), LR1400(G), LF700, LF1400, LRF300 and LDF700
DV44	flexible divider kit for DR150 drawer creating 4 compartments with 2 flexible dividers each	
IN02M	2 separate inner doors of Lexan® material for LabMini	LR130(G), BB130, LF130, LDF130, BP130
IN02	2 separate inner doors of Lexan® material for Slimlines	
IN04	4 separate inner doors of Lexan® material for Slimlines	LR700(G), BB700, LR1400(G), BB1400, LF700, LDF700, BP700 and LF1400
IN06	6 separate inner doors of Lexan® material for Slimlines	
INL100	lock option for Lexan® inner doors	
ST100	sample throughput with hole (18 mm inner diam) with stopper	
PS050	vapour proof power socket (single)	
PS100	vapour proof power socket (double)	
PT100PS	separate PT100 (installed inside cabinet (buffered solution)	All Slimlines
WC200	water cooled condenser option for Slimline Series	
IQOQ200	factory filled in IQ/OQ protocol package Slimline series	
NRS100	natural refrigerant option Slimline unit	
RA100	compressor / condenser alarm with battery (audible and visual alarm)	
RA200	power failure alarm with battery (audible and visual alarm)	
PR200	heated pressure release valve (2 way) Slimline series recommended in case of frequent door opening -35°C	LDF700, BP700 and LRF300 bottom part

Specials: We are flexible in any kind of special requirements. Please specify model number and exact requirements for: 60 Hz, 110-115 V or EX classified according ATEX

Wireless Lab® plug & play monitoring & alarm system

Wireless Lab is a wireless and plug & play solution for easy monitoring and safe storage of temperature, CO₂ and relative humidity data. Monitor your refrigerators and freezers without using any paper, installation time or software. Just check your equipment performance on every PC with internet access. Additionally you can receive alarms on your mobile phone or e-mail address.



- Put sensor (PT1000, CO₂ sensor, RH sensor) inside your refrigerator or freezer. The wireless module is battery powered
- The wireless modules are sending the data to the main communication station (max 32 per station)
- All data is collected and transmitted to a secured data server (with LAN or GPRS)
- Wherever you are: on www.wirelesslab.eu you can check your equipment performance and receive alarms